

INDEX OF DRAWINGS	
PAGE	DESCRIPTION
001	OVERALL MAP
002	KEY MAP
003	A07 - PLAN VIEW
004	A08 - PLAN VIEW
005	B07 - PLAN VIEW
006	B08 - PLAN VIEW
007	C07 - PLAN VIEW
008	C08 - PLAN VIEW
009	D07 - PLAN VIEW
010	E07 - PLAN VIEW
011	CROSS SECTION
012	MOT
013	DETAILS



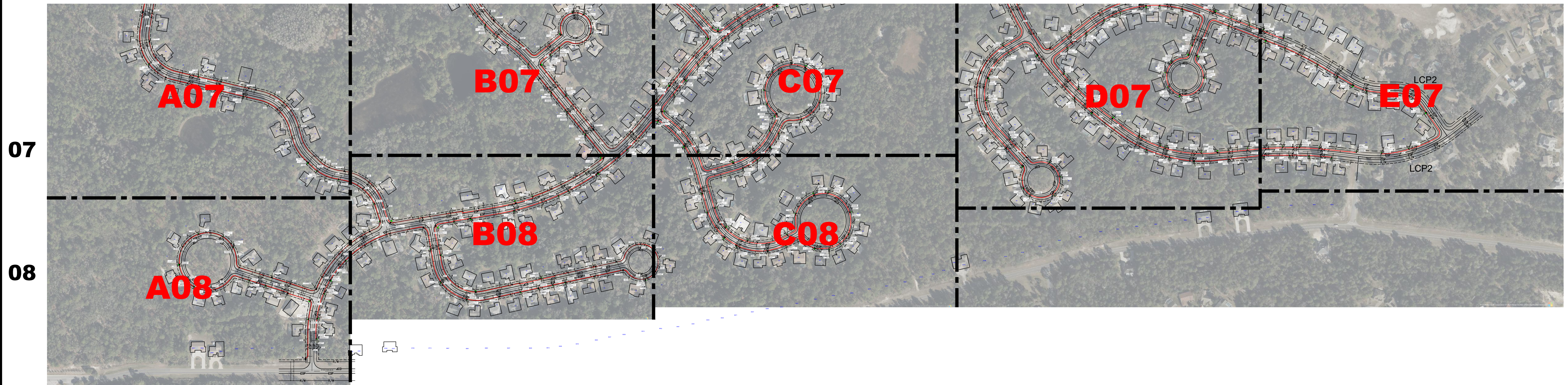
A

B

C

D

E



BLUE STREAM FIBER

12409 NW 35th Street
Coral Springs, FL 33065



KEYMAP

002 OF 013

CYPRESS VILLAGE

LCP1



SEE DWG: B07

SEE DWG: A08

BLUE STREAM FIBER

12409 NW 35th Street
Coral Springs, FL 33065



A07

003 OF 013

**CYPRESS VILLAGE
LCP1**



SEE DWG: B08

BLUE STREAM FIBER

12409 NW 35th Street
Coral Springs, FL 33065



A08

004 OF 013

CYPRESS VILLAGE
LCP1

SEE DWG: A07

SEE DWG: C07



SEE DWG: B08

BLUE STREAM FIBER

12409 NW 35th Street
Coral Springs, FL 33065



B07

005 OF 013

CYPRESS VILLAGE LCP1

SEE DWG: B07



SEE DWG: A07

SEE DWG: C08

BLUE STREAM FIBER
12409 NW 35th Street
Coral Springs, FL 33065



B08
006 OF 013

CYPRESS VILLAGE
LCP1

© 2024 Microsoft Corporation. © 2024 Maxar. © CNES (2024). Distribution Airbus DS.



SEE DWG: B07

SEE DWG: D07

SEE DWG: C08

BLUE STREAM FIBER
 12409 NW 35th Street
 Coral Springs, FL 33065



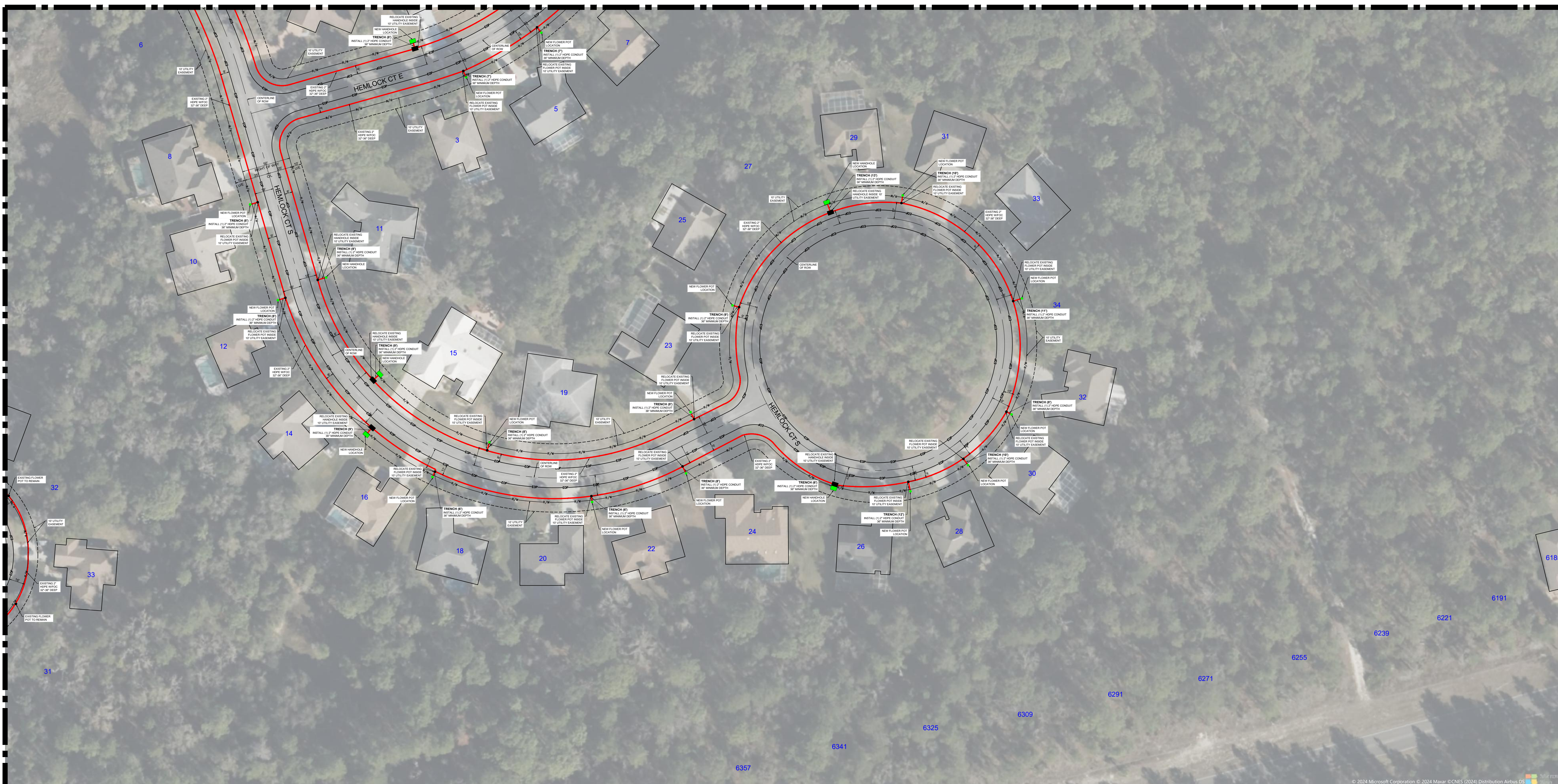
C07
 007 OF 013

CYPRESS VILLAGE
 LCP1

SEE DWG: C07

SEE DWG: B08

SEE DWG: D08



BLUE STREAM FIBER
 12409 NW 35th Street
 Coral Springs, FL 33065



C08
 008 OF 013

CYPRESS VILLAGE
 LCP1

© 2024 Microsoft Corporation. © 2024 Maxar. © CNES (2024). Distribution Airbus DS

SEE DWG: C07

SEE DWG: D07

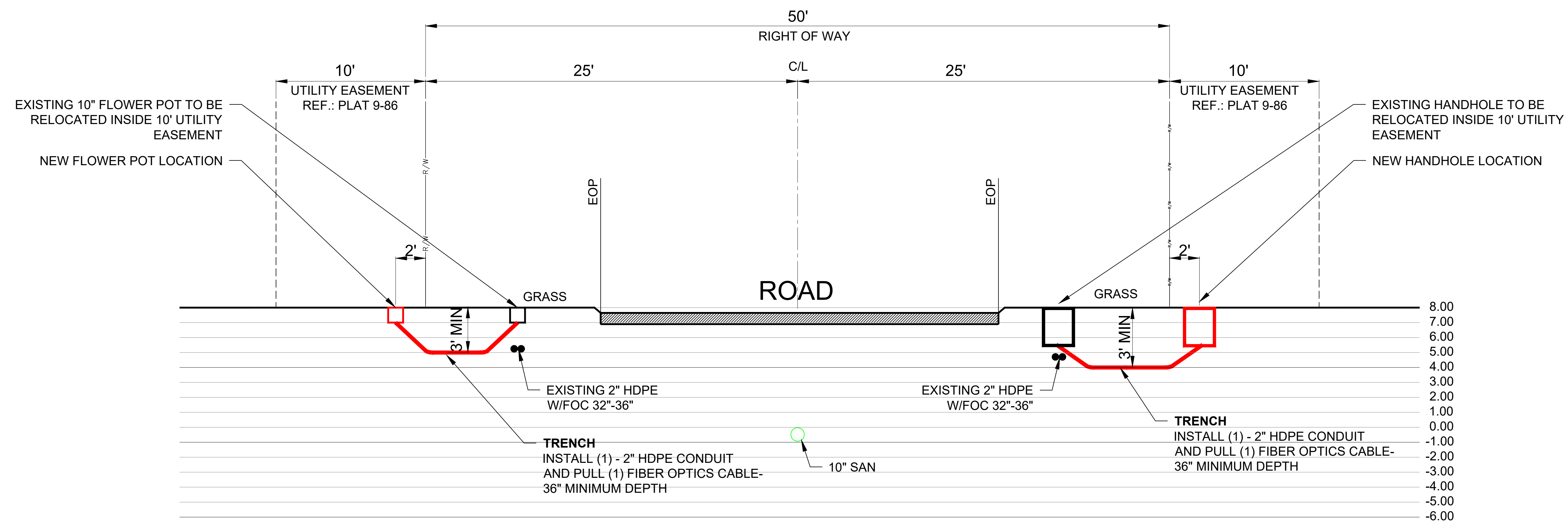


BLUE STREAM FIBER
 12409 NW 35th Street
 Coral Springs, FL 33065



D07
 009 OF 013

CYPRESS VILLAGE
 LCP1



TYPICAL CROSS SECTION



NOTE:

1. This Index applies to Two-Lane, Two-Way and Multilane Roadways, including Medians of divided roadways, with work on the shoulder.

2. L = Taper Length
 X = Work Zone Sign Spacing
 B = Buffer Length
 See Index 102-600 for "L", "X", "B", and channelizing device spacing values.

3. Where work activities are between 2' and 15' from the edge of traveled way, the Engineer may omit signs and channelizing devices for work operations 60 minutes or less.

4. When four or more work vehicles enter the through traffic lanes in a one hour period (excluding establishing and terminating the work area), use a flagger or lane closure to accommodate work vehicle ingress and egress.

5. For work less than 2' from the traveled way and work zone speed is greater than 45 MPH, use a lane closure.





6. The "Speeding Fines Doubled When Workers Present" signs (MOT-13-06) and "End Road Work" signs (G20-2) along with the associated work zone sign spacing distances may be omitted when the work operation is in place for 24 hours or less.

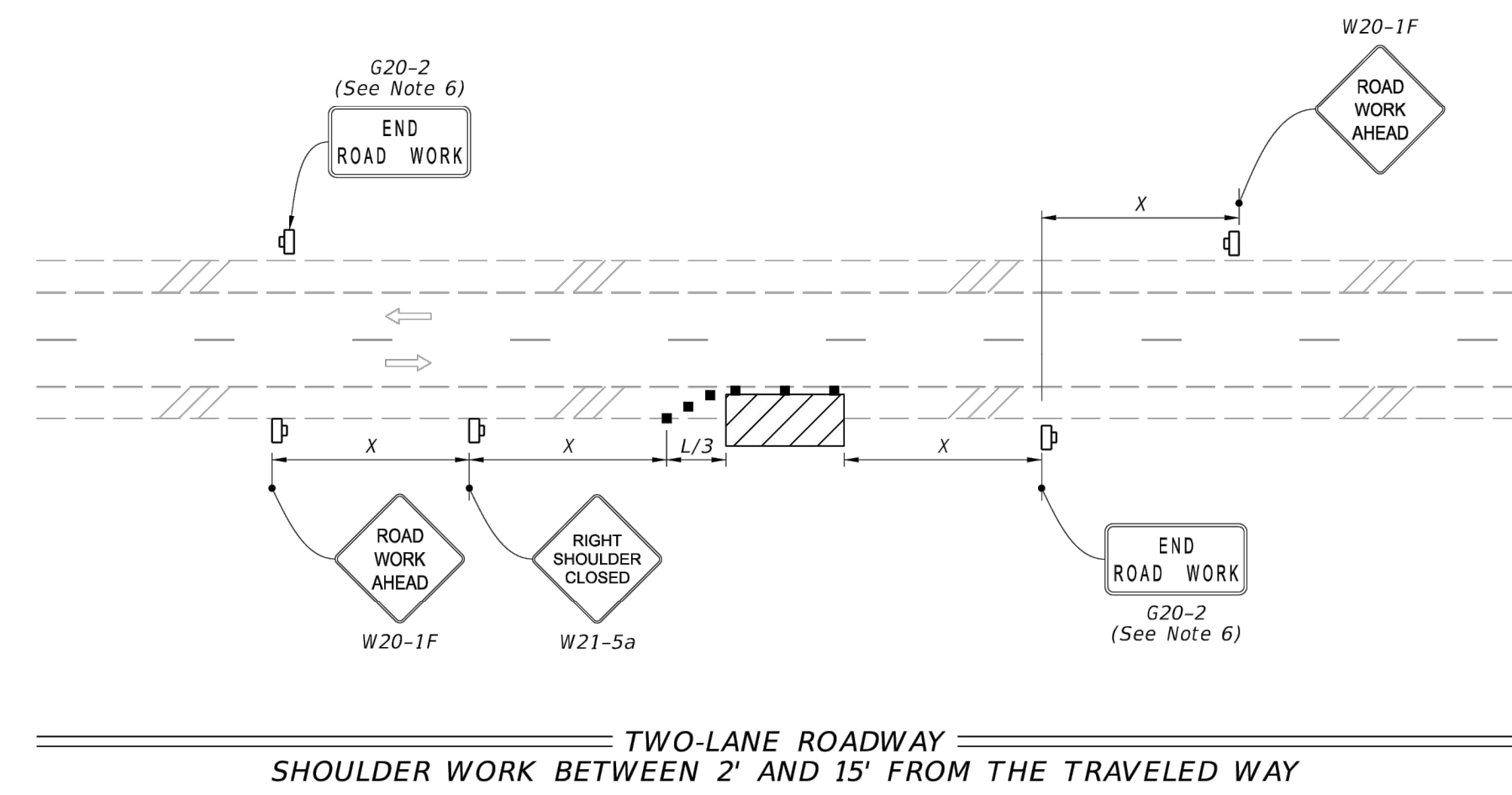
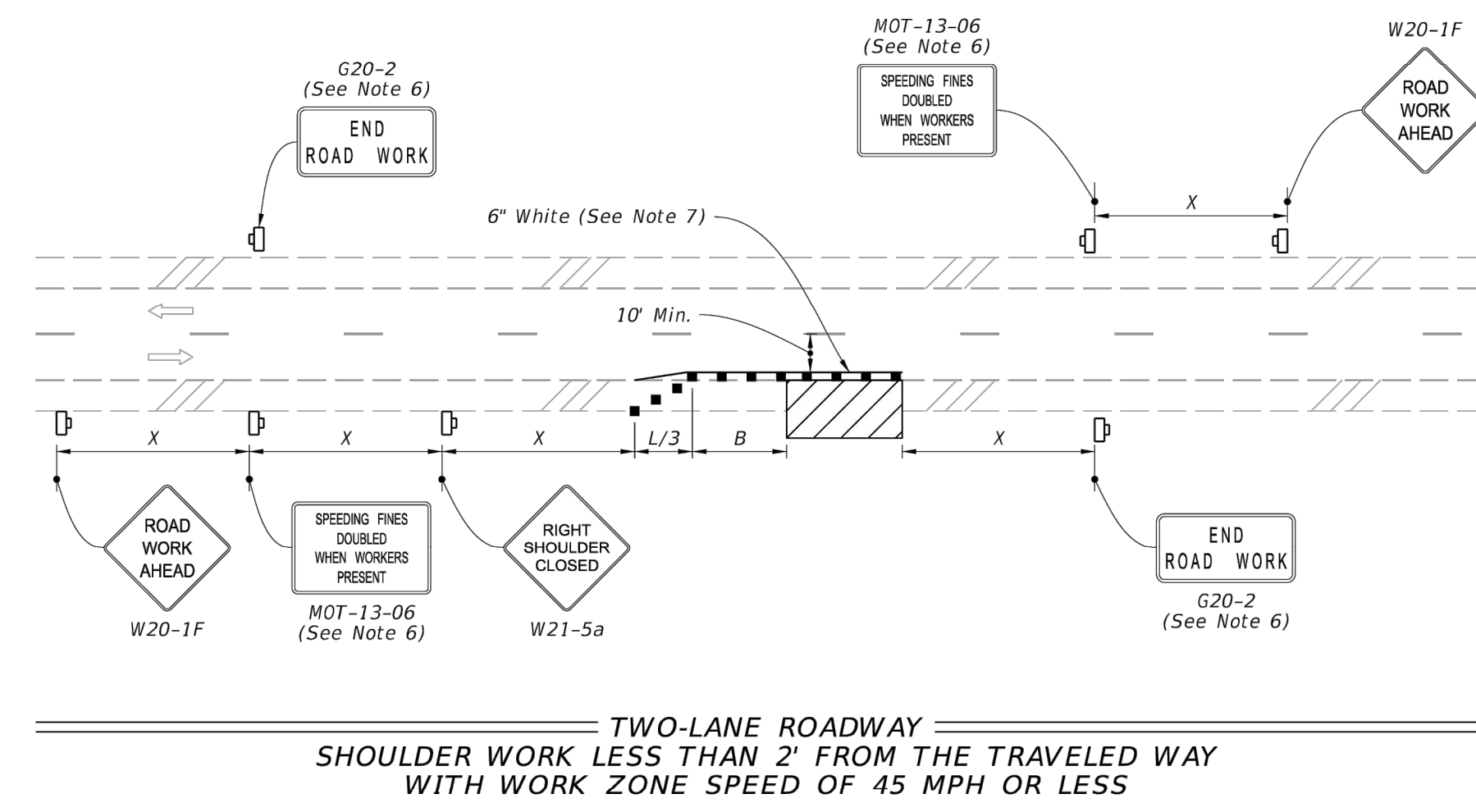
7. Temporary pavement markings may be omitted when the work operation is in place for 3 days or less.

8. Omit "Shoulder Closed" signs (W21-5a) along with associated work zone sign spacing distances for work on the median.

9. When there is no paved shoulder, the "Worker" sign (W21-1) may be used instead of the "Shoulder Closed" sign (W21-5a).

SYMBOLS:

-  Work Area
-  Channelizing Device (See Index 102-600)
-  Work Zone Sign
-  Lane Identification and Direction of Traffic



2/2/2023 10:33:35 AM

LAST REVISION 11/01/21	DESCRIPTION: FY 2023-24 STANDARD PLANS	TWO-LANE AND MULTILANE, WORK ON SHOULDER	INDEX 102-602	SHEET 1 of 2
---------------------------	--	--	------------------	-----------------

TYPICAL MAINTENANCE OF TRAFFIC

BLUE STREAM FIBER
 12409 NW 35th Street
 Coral Springs, FL 33065



MOT

012 OF 013

CYPRESS VILLAGE
 LCP1



Charles Below Grade Enclosures

Molded Polyethylene Handholes for Telecommunications, Utility, Broadband Cable and Municipality Placements

Charles Below Grade Enclosure (CBGE) are lightweight, molded polyethylene handholes available in eight tapered rectangular and two round sizes. Designed for light duty placements (parkway/greenbelt applications), these sturdy below grade enclosures serve a variety of purposes in telecommunications, wireless, utility, CATV and municipality networks.

Constructed from high-density polyethylene (HDPE), Charles Below Grade Enclosures are built to provide years of maintenance-free service and superior shelter for buried network components. CBGE allow technicians easy handhole access to splice cases, control valves, slack cable, and other equipment at network junctions. Molded-in or applied nameplates offer convenient identification, and several security bolt patterns are available.



Below Grade Enclosures

FEATURES

- Structurally rugged, non-metallic molded polyethylene material composition produces enclosures that are durable, lightweight, easy to install, and resistant to chemicals and water
- Tapered sides create maximum usable interior space, and allow both rectangular and round enclosures to be nested for compact shipping and storage
- Deep well bottom edges provide long-term stability in below grade placements
- Variety of drop-in or molded-in nameplates are available, with custom nameplates available via special order
- Multiple molded-in colors available - green, gray, and black
- Skid resistant covers improve safety
- Stainless steel bolts
- Integrated EMS detection available

APPLICATIONS

CBGE are designed to meet or exceed ANSI/SCTE ratings for light duty, pedestrian-only (greenbelt) applications, including:

- Fiber optic and copper slack cable coiling and storage
- Access to sealed cases (splice cases, repeaters, load coils, SmartCoils™, etc.)
- Meter boxes
- Irrigation system and other waterway control valves
- Integrated EMS detection available
- Traffic signal controls
- Ground rods

MARKETS SERVED:

- Telecom / FTTX
- Utility
- Wireless
- Broadband Cable

P060010

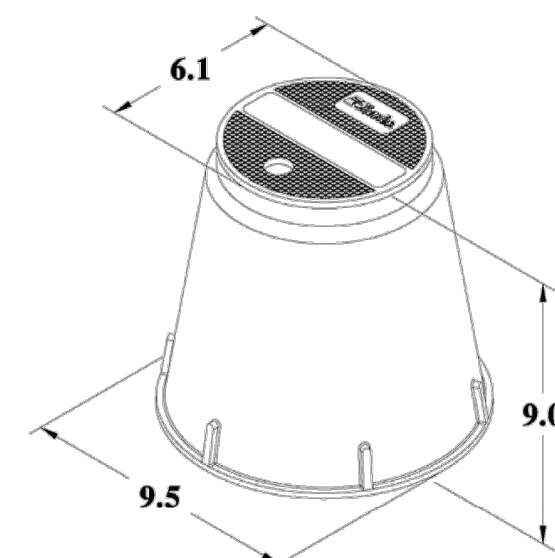


Shown with Mousehole Option

Appx. Dimensions:
06"W x 00"L x 10"D

Cover Weight (Overlapping Cover): 0.25 lb.
Box Weight: 1.0 lbs.
Assembly Weight: 1.25 lbs.

Pallet Quantity: 500
Loaded Pallet Weight: 675 lbs.



P100010

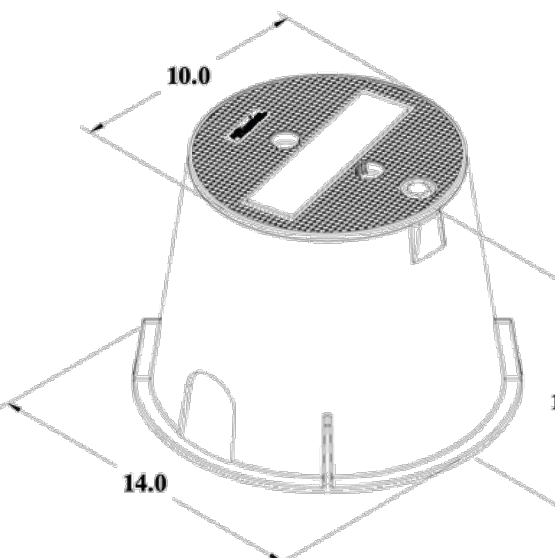


Mousehole Option Available

Appx. Dimensions:
10"W x 00"L x 10"D

Cover Weight (Overlapping Cover): 1 lb.
Box Weight: 3 lbs.
Assembly Weight: 4 lbs.

Pallet Quantity: 180
Loaded Pallet Weight: 770 lbs.



P141912

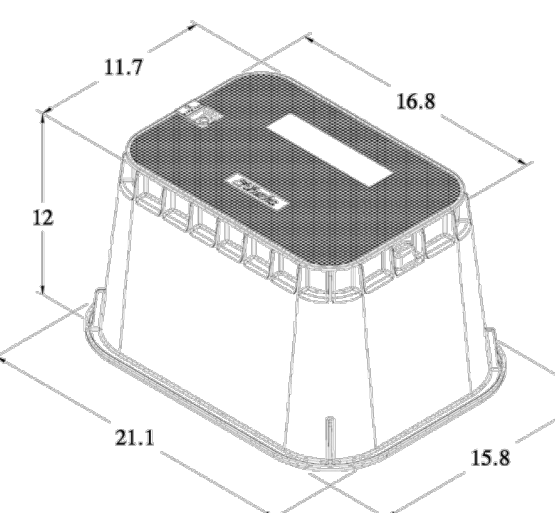


Mousehole Option Available

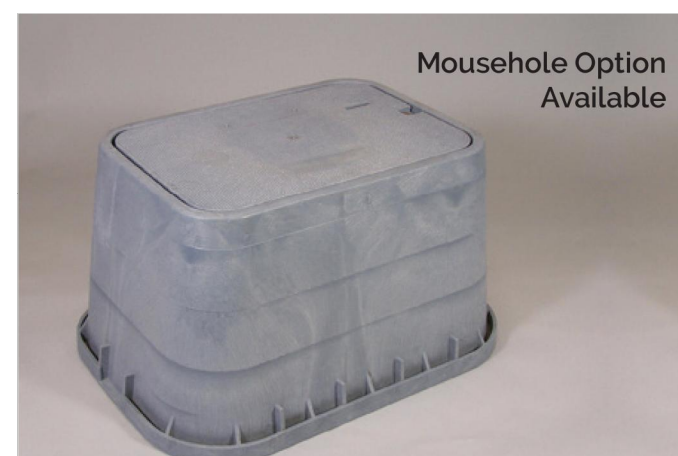
Appx. Dimensions:
14"W x 19"L x 12"D

Cover Weight (Overlapping Cover): 2 lbs.
Box Weight: 6 lbs.
Assembly Weight: 8 lbs.

Pallet Quantity: 78
Loaded Pallet Weight: 635 lbs.



P142015

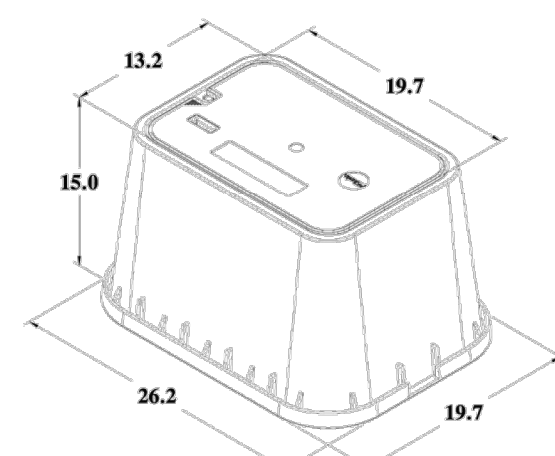


Mousehole Option Available

Appx. Dimensions:
14"W x 20"L x 15"D

Cover Weight (Overlapping Cover): 6 lbs.
Box Weight: 12 lbs.
Assembly Weight: 18 lbs.

Pallet Quantity: 100
Loaded Pallet Weight: 1850 lbs.



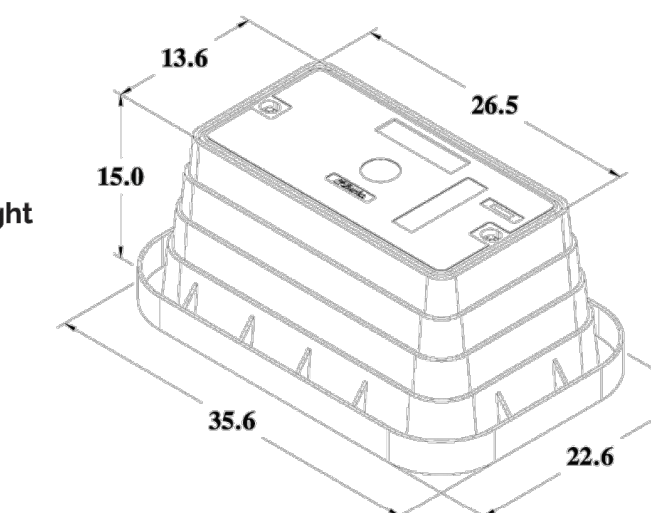
P132415



Appx. Dimensions:
13"W x 24"L x 15"D

Cover Weight (Overlapping Cover): 5 lbs.
Box Weight: 19 lbs.
Assembly Weight: 25 lbs.

Pallet Quantity: 30
Loaded Pallet Weight: 800 lbs.



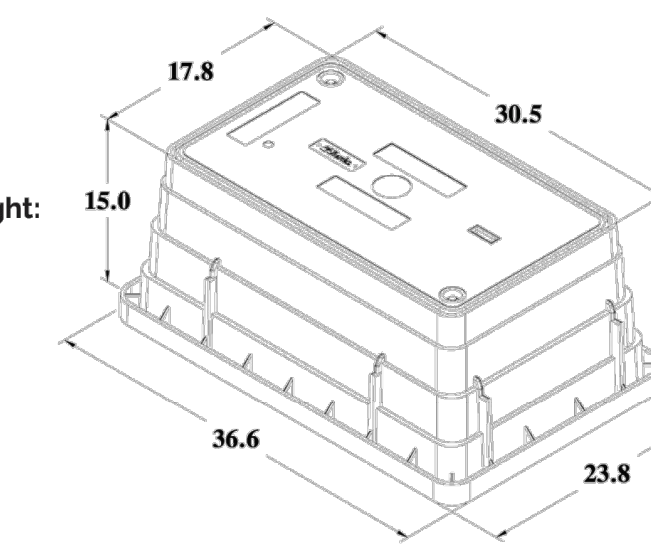
P173015



Appx. Dimensions:
17"W x 30"L x 15"D

Cover Weight (Overlapping Cover): 11 lb.
Box Weight: 20 lbs.
Assembly Weight: 31 lbs.

Pallet Quantity: 20
Loaded Pallet Weight: 670 lbs.



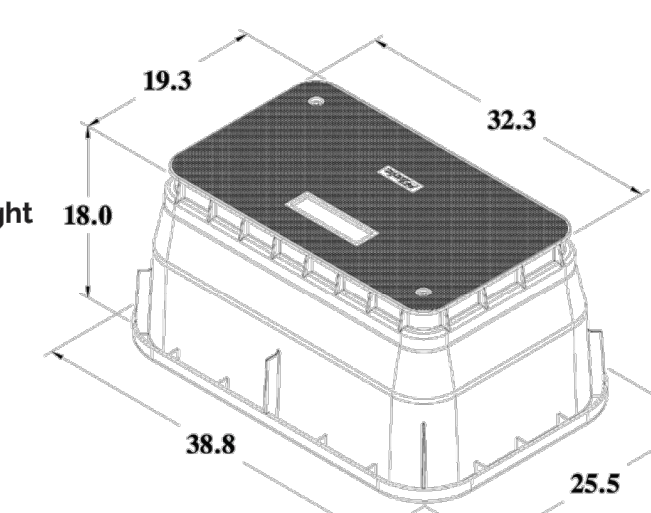
P173018



Appx. Dimensions:
17"W x 30"L x 18"D

Cover Weight (Overlapping Cover): 11 lbs.
Box Weight: 21 lbs.
Assembly Weight: 32 lbs.

Pallet Quantity: 10
Loaded Pallet Weight: 370 lbs.



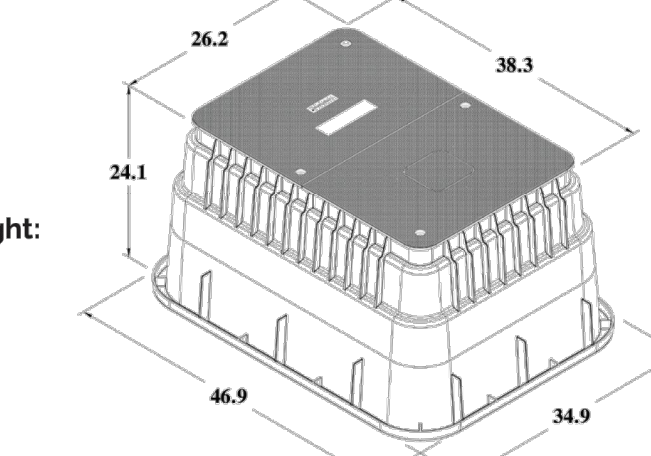
P243624



Appx. Dimensions:
24"W x 36"L x 24"D

Cover Weight (Overlapping Cover): 20 lbs.
Box Weight: 47 lbs.
Assembly Weight: 67 lbs.

Pallet Quantity: 6
Loaded Pallet Weight: 402 lbs.



©2023 Charles Industries, LLC - All Rights Reserved - Specifications Subject to Change

D-OSP082-C23

charlesindustries.com



©2023 Charles Industries, LLC - All Rights Reserved - Specifications Subject to Change

D-OSP082-C23

charlesindustries.com



©2023 Charles Industries, LLC - All Rights Reserved - Specifications Subject to Change

D-OSP082-C23

charlesindustries.com

BLUE STREAM FIBER

12409 NW 35th Street
Coral Springs, FL 33065



DETAILS

013 OF 013

CYPRESS VILLAGE
LCP1